

**BASIC DETAILS**

**03845--H R GREEN FIELD HIGH SCHOOL BADLI RD JHAJJAR HRY**  
**Dated : 06/02/2019**

<b>SCHOOL NAME</b>	H R GREEN FIELD HIGH SCHOOL BADLI RD JHAJJAR HRY	<b>SCHOOL CODE</b>	03845
<b>ADDRESS</b>	H R GREEN FIELD HIGH SCHOOL,BADLI ROAD,	<b>AFFILIATION CODE</b>	530319
<b>PRINCIPAL</b>	MR MOHINDER SINGH GULIA	<b>PRINCIPAL'S CONTACT NUMBER</b>	9466281718
<b>PRINCIPAL'S EMAIL ID</b>	msgulia71@yahoo.com	<b>PRINCIPAL'S RETIREMENT DATE</b>	25/09/2029
<b>SCHOOL'S CONTACT NUMBER</b>	1251-8199888670	<b>SCHOOL'S EMAIL ID</b>	hrgfsjrr@yahoo.co.in
<b>SCHOOL'S WEBSITE</b>	www.gfsjhajjar.edu.in	<b>SCHOOL'S FAX NUMBER</b>	1251252277
<b>LANDMARK NEAR SCHOOL</b>	Near new grain market Jhajjar	<b>YEAR OF ESTABLISHMENT</b>	2000
<b>AFFILIATION VALIDITY</b>	2000 TO 2019	<b>AFFILIATION STATUS</b>	PROVISIONAL
<b>NAME OF THE TRUST/SOCIETY/COMPANY REGISTERED WITH</b>	The Jhajjar Navodaya Education Society	<b>REGISTRATION DATE</b>	23/10/2013
<b>SOCIETY REGISTRATION NUMBER</b>	00453	<b>REGISTRATION VALIDITY</b>	PERMANENT REGISTRATION
<b>NOC ISSUING AUTHORITY</b>	Director Secondary Education Haryana	<b>NOC ISSUING DATE</b>	23/06/2000

<b>NO OBJECTION CERTIFICATE</b>	<b>VIEW (PdfHandler.aspx? FileName=G:\cbse\2018\oasis\noc\03845.PDF)</b>	<b>NON PROPRIETY CHARACTER AFFIDAVIT/NON PROFIT COMPANY AFFIDAVIT</b>	<b>VIEW (PdfHandler.aspx? FileName=G:\cbse\2018\oasis\affidavit\03845.PDF)</b>
-------------------------------------	--	---	--

**FACULTY DETAILS**03845--H R GREEN FIELD HIGH SCHOOL BADLI RD JHAJJAR HRY  
Dated : 06/02/2019

<b>TOTAL NUMBER OF TEACHERS (ALL CLASSES)</b>	47	<b>NUMBER OF PGTs</b>	15
<b>NUMBER OF TGTs</b>	15	<b>NUMBER OF PRTs</b>	10
<b>NUMBER OF PETs</b>	1	<b>OTHER NON-TEACHING STAFF</b>	5
<b>NUMBER OF MANDATORY TRAINING QUALIFIED TEACHERS</b>	15	<b>NUMBER OF TRAININGS ATTENDED BY FACULTY SINCE LAST YEAR</b>	8

**STUDENT DETAILS**

<b>CLASS</b>	<b>TOTAL NUMBER OF SECTIONS</b>	<b>TOTAL NUMBER OF INTAKE</b>	<b>TOTAL NUMBER OF STUDENTS</b>
<b>1</b>	02	42	42
<b>2</b>	02	3	50
<b>3</b>	02	2	49
<b>4</b>	02	6	44
<b>5</b>	02	7	63
<b>6</b>	02	11	77
<b>7</b>	03	5	84
<b>8</b>	02	7	75
<b>9</b>	02	5	67
<b>10</b>	02	1	71
<b>11</b>	03	13	58
<b>12</b>	02	0	66

**ACADEMIC DETAILS**

03845--H R GREEN FIELD HIGH SCHOOL BADLI RD JHAJJAR HRY

Dated : 06/02/2019

<b>SUBJECTS OFFERED FOR CLASS 10</b>	<b>SUBJECTS OFFERED FOR CLASS 12</b>
402---INFO TECHNOLOGY 086---SCIENCE 087---SOCIAL SCIENCE 101---ENGLISH COMM. 165---FOUNDATION OF I T 184---ENGLISH LNG & LIT. 002---HINDI COURSE-A 041---MATHEMATICS 085---HINDI COURSE-B	301---ENGLISH CORE 500---WORK EXPERIENCE 502---PHY & HEALTH EDUCA 503---GENERAL STUDIES 002---HINDI ELECTIVE 027---HISTORY 028---POLITICAL SCIENCE 029---GEOGRAPHY 030---ECONOMICS 041---MATHEMATICS 042---PHYSICS 043---CHEMISTRY 044---BIOLOGY 048---PHYSICAL EDUCATION 054---BUSINESS STUDIES 055---ACCOUNTANCY 083---COMPUTER SCIENCE

**INFRASTRUCTURE DETAILS**

<b>TOTAL NUMBER OF SITES OF SCHOOL</b>	1	<b>TOTAL NUMBER OF BUILDING BLOCKS</b>	3
<b>TOTAL AREA OF SCHOOL IN SQUARE METRES</b>	8296	<b>TOTAL NUMBER OF PLAYGROUNDS</b>	7
<b>TOTAL AREA OF PLAYGROUND IN SQUARE METRES</b>	5487	<b>TOTAL NUMBER OF ROOMS</b>	51
<b>TOTAL NUMBER OF SMALL-SIZED ROOMS</b>	8	<b>TOTAL NUMBER OF MEDIUM-SIZED ROOMS</b>	36
<b>TOTAL NUMBER OF LARGE-SIZED ROOMS</b>	6	<b>TOTAL NUMBER OF MALE REST ROOM</b>	3
<b>TOTAL NUMBER OF FEMALE REST ROOM</b>	2	<b>NUMBER OF GIRLS' TOILET</b>	23
<b>NUMBER OF BOYS' TOILET</b>	24	<b>NUMBER OF TOILETS FOR DIFFERENTLY ABLED PERSONS</b>	3
<b>NUMBER OF WASHROOMS FOR FEMALE STAFF</b>	10	<b>NUMBER OF WASHROOMS FOR MALE STAFF</b>	4
<b>TOTAL NUMBER OF LIBRARIES</b>	1	<b>NUMBER OF LABORATORIES</b>	7
<b>TOTAL NUMBER OF STUDENT CANTEENS</b>	1	<b>TOTAL NUMBER OF STAFF CANTEENS</b>	1

<b>NUMBER OF WATER PURIFIERS/ROs</b>	1	<b>NUMBER OF AUDITORIUMS</b>	0
<b>NUMBER OF LIFTS/ELEVATORS</b>	0	<b>NUMBER OF DIGITAL CLASSROOMS</b>	3
<b>DOES THE SCHOOL HAS HOSTEL FACILITY</b>	NO	<b>DOES THE SCHOOL HAS GUARDS EMPLOYED FOR SAFETY</b>	YES
<b>DOES THE SCHOOL HAS FIRE EXTINGUISHERS</b>	YES	<b>DOES THE SCHOOL HAS SPRINKLERS</b>	YES
<b>DOES THE SCHOOL HAS CCTV CAMERAS INSTALLED?</b>	YES	<b>IS THE SCHOOL EXAMINATION CENTER OF CBSE?</b>	NO
<b>TOTAL NUMBER OF COMPUTERS IN ALL COMPUTER LAB</b>	30	<b>DOES THE SCHOOL HAS WEB SERVERS</b>	NO
<b>DOES THE SCHOOL HAS A BOUNDARY WALL?</b>	YES	<b>IS YOUR SCHOOL BARRIER FREE/ HAS RAMPS?</b>	NO
<b>DOES THE SCHOOL HAS CLINIC FACILITY?</b>	NO	<b>DOES THE SCHOOL HAS A STRONG ROOM?</b>	YES
<b>DOES THE SCHOOL HAS A GYMNASIUM?</b>	NO	<b>IS YOUR SCHOOL WI-FI ENABLED?</b>	YES
<b>PROVISION OF WEB BASED LEARNING PROGRAMS?</b>	NO	<b>DOES THE SCHOOL HAS FIRE ALARMS?</b>	NO

<b>DOES THE SCHOOL HAS SPORTS FACILITY?</b>	YES	<b>DOES THE SCHOOL HAS INDOOR GAMES FACILITY?</b>	YES
<b>DOES THE SCHOOL HAS A SWIMMING POOL?</b>	YES	<b>DOES THE SCHOOL HAS DANCE/MUSIC FACILITY?</b>	YES
<b>TOTAL NUMBER OF BUSES OWNED</b>	13	<b>TOTAL NUMBER OF BUSES HIRED</b>	1
<b>TOTAL NUMBER OF VANS/MATADORS</b>	3	<b>TOTAL NUMBER OF DRIVERS</b>	15
<b>NUMBER OF FEMALE ATTENDANTS FOR BUS DUTY</b>	14	<b>NUMBER OF ACTIVITY ROOMS</b>	1
<b>NAME OF TRANSPORT COORDINATOR</b>	Ramkishan	<b>TRANSPORT COORDINATOR CONTACT</b>	9812162158
<b>BUILDING SAFETY CERTIFICATE</b>	<b>VIEW (PdfHandler.aspx? FileName=G:\cbse\2018\oasis\building\03845.PDF)</b>	<b>TRANSPORT SAFETY CERTIFICATE</b>	<b>VIEW (PdfHandler.aspx? FileName=G:\cbse\2018\oasis\transport\03845.PDF)</b>



**LOCATION DETAILS**

03845--H R GREEN FIELD HIGH SCHOOL BADLI RD JHAJJAR HRY

Dated : 06/02/2019

<b>NEAREST NATIONALISED BANK</b>	Union Bank Of India	<b>DISTANCE OF BANK FROM SCHOOL IN KM</b>	1.5
<b>NEAREST BUS STATION</b>	Jhajjar	<b>DISTANCE OF BUS TERMINAL FROM SCHOOL IN KM</b>	6
<b>NEAREST RAILWAY STATION</b>	Jhajjar	<b>DISTANCE OF RAILWAY STATION FROM SCHOOL IN KM</b>	6
<b>NEAREST AIRPORT</b>	IGI Airport New Delhi	<b>DISTANCE OF AIRPORT FROM SCHOOL IN KM</b>	50
<b>NEAREST HOSPITAL</b>	Civil Hospital Jhajjar	<b>DISTANCE OF HOSPITAL FROM SCHOOL IN KM</b>	6
<b>NEAREST POLICE STATION</b>	Jhajjar	<b>DISTANCE OF POLICE STATION FROM SCHOOL IN KM</b>	5
<b>NEAREST METRO STATION</b>	bahadurgarh	<b>DISTANCE OF METRO FROM SCHOOL IN KM</b>	40

**OTHER VITAL INFORMATION**

<b>10th BOARD PASS PERCENTAGE (2014/2015/2016)</b>	100/100/100	<b>12th BOARD PASS PERCENTAGE (2014/2015/2016)</b>	100/90.9/97.3
<b>NAME OF WELLNESS/ACTIVITY TEACHER</b>	YES	<b>NAME OF GRIEVANCE/COMPLAINT REDRESSAL OFFICER</b>	Krishan Kumar
<b>CONTACT NUMBER OF GRIEVANCE/COMPLAINT REDRESSAL OFFICER</b>	9813490573	<b>EMAIL ID OF GRIEVANCE/COMPLAINT REDRESSAL OFFICER</b>	hrgfsjrr@yahoo.co.in
<b>NAME OF HEAD OF SEXUAL HARASSMENT COMMITTEE</b>	Hitesh Sharma	<b>CONTACT NUMBER OF HEAD OF SEXUAL HARASSMENT COMMITTEE</b>	8059119481
<b>EMAIL ID OF HEAD OF SEXUAL HARASSMENT COMMITTEE</b>	hrgfsjrr@yahoo.co.in	<b>NAME OF CONTACT PERSON IN CASE OF EMERGENCY</b>	Jitender Dhankhar
<b>CONTACT NUMBER OF CONTACT PERSON IN CASE OF EMERGENCY</b>	9992037968	<b>EMAIL ID OF CONTACT PERSON IN CASE OF EMERGENCY</b>	dhankhar.jitender9@gmail.com
<b>TOTAL NUMBER OF DOCTORS IN SCHOOL CLINIC</b>	0	<b>TOTAL NUMBER OF NURSES IN SCHOOL CLINIC</b>	0
<b>TOTAL NUMBER OF BEDS IN SCHOOL CLINIC</b>	0	<b>LEVEL OF INVOLVEMENT OF SCHOOL IN CBSE ACTIVITIES</b>	ACTIVE

<b>DO THE TEACHERS GET PROPER GRADE LIKE PGT/TGT AS PER THE CLASSES THEY ARE ENTITLED TO TEACH?</b>	YES	<b>DO THE TEACHERS AND STAFF GET THEIR SALARY WITHIN FIRST WEEK OF THE MONTH?</b>	YES
<b>DOES THE SCHOOL HAS EPF FACILITY FOR STAFF</b>	YES	<b>EPF REGISTRATION NUMBER</b>	HR20703
<b>MODE OF SALARY PAYMENT</b>	cheque,	<b>NAME OF BANK WITH SALARY ACCOUNT</b>	Union Bank of India Jhajjar
<b>ARE THE SCHOOL ACCOUNTS AUDITED REGULARLY?</b>	YES	<b>PARENT TEACHERS ASSOCIATION AS PER NORMS</b>	YES
<b>ACADEMIC SESSION</b>	<b>APRIL TO MARCH</b>	<b>VACATION PERIOD</b>	<b>JUNE TO JUNE</b>
<b>AUDITED BALANCE SHEET OF SCHOOL</b>	<b>VIEW (PdfHandler.aspx? FileName=G:\cbse\2018\oasis\balance\03845.pdf)</b>	<b>STAFF STATEMENT OF SCHOOL</b>	<b>VIEW (PdfHandler.aspx? FileName=G:\cbse\2018\oasis\staff\03845.pdf)</b>
<b>INCOME AND EXPENDITURE STATEMENT</b>	<b>VIEW (PdfHandler.aspx? FileName=G:\cbse\2018\oasis\income\03845.pdf)</b>	<b>ACADEMIC CALENDAR OF SCHOOL</b>	<b>VIEW (PdfHandler.aspx? FileName=G:\cbse\2018\oasis\academic\03845.pdf)</b>

#### BEST PRACTICES OF SCHOOL

The school is providing education to rural as well as to the urban background students. We are providing healthy environment to study. We are giving 100% result from last three years no failure in 12th Science and Commerce and in 10th also.

**FEE STRUCTURE OF SCHOOL****03845--H R GREEN FIELD HIGH SCHOOL BADLI RD JHAJJAR HRY**  
**Dated : 06/02/2019**

<b>CLASS</b>	<b>ADMISSION FEE (in Rupees)</b>	<b>TUITION FEE (in Rupees)</b>	<b>YEARLY DEVELOPMENT CHARGES (in Rupees)</b>	<b>ANNUAL/MONTHLY OTHER CHARGES FOR OTHER FACILITIES (in Rupees)</b>
<b>PRIMARY</b>	4000	2100	4200	0
<b>MIDDLE</b>	4500	2600	4900	0
<b>SECONDARY</b>	5400	3000	6500	0
<b>SENIOR SECONDARY</b>	5700	4500	7000	0

## PHOTO OF SCHOOL

### SCHOOL PHOTOS

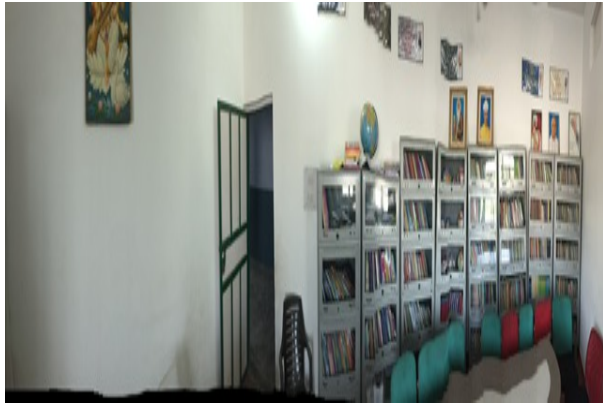
#### GEO-TAGGED PHOTO



#### PLAYGROUND PHOTO



**LIBRARY PHOTO**



**SCIENCE LAB PHOTO**



**PHYSICS LAB PHOTO**



**CHEMISTRY LAB PHOTO**



**BIOLOGY LAB PHOTO**



**Copyright © 2018 CBSE (login.aspx).** All rights reserved.